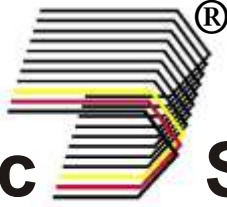




**Elektro - Elektronik
Pranjic**

Certified according DIN EN ISO 9001:2000
and according to directive 94/9/EG



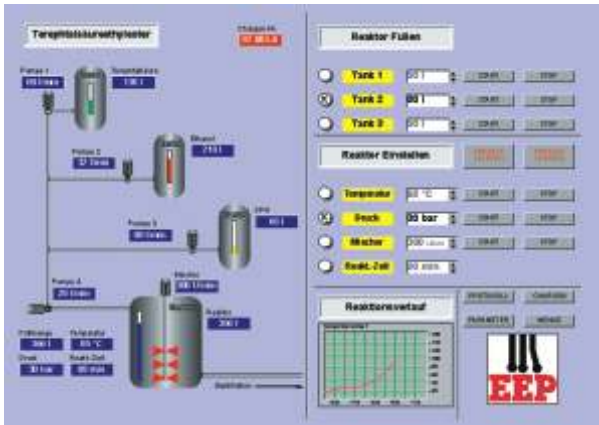
PRA_matic System



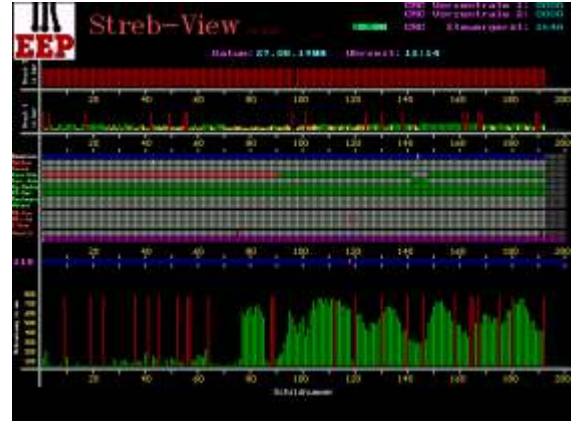
CE 0158

**IPC
in explosion proof housing PR 111**

for chemical, mining and industry processes



Left: chemical plant



Right: fully automatic roof support underground

Examples of the visualisation in several specifications.

Description

The IPC in the explosion proof "d" housing PR 111 is consistent pressure with integrated bullet-proof glass disk. Its certified both for the mining industry and for the employment in the chemical industry.

The inserted hardware consists of a PC standardmodul in PC/104 bus technology. This module offers the full functionality of modern PC's according the current technical standart, inclusive monitoring functions, like power Fail and Watchdog.

A sufficient main memory is available. Storage takes place on an extremely shock-firm mini non removable disk (Flash - memory such as MEMORY stick or FP as in the laptop).

The PC 111 full fills international characteristics for industrial PC's.

With the PC 111 the customer is able to install, implement and to work with his own programs.

The IPC in the pressure resistant housing can communicate over fiber optic Ethernet, Profibus FSK and max. 4 serial opto- interfaces with the external world.

The current supply of the PC's takes over a power pack integrated in the housing. The data are represented on a TFT display (15" to 17").

For operation its own, certified PS/2 compatible PC keyboard with Akku current supply and infrared data communication stands for the user for order.



Front view of the PC

Technical data

Housing: explosion proof
 Dimensions: 52 x 41 x 22 cm up to 74 x 63 x 22 cm
 Weight: depend of the version

System Windows 2000/ XP

Technical data of the PC:

	Standard:	Low-Cost:
-CPU:	800 MHz	533MHz
-System cache:	512 MB	256MHz
-Interfaces:	4xseriell 2 x USB PC104/PC104+ 3x Profibus-interface 1x LWL Interface	not expandable 2 x USB not expandable opt. max 1 1 x LWL interface
Harddisc(2,5")	40GB(1) or CF 1 GB(2) Flash without Festplatte	20GB(1) or CF 512 MB(2) Flash without Festplatte
Display:	15" / 17"	15"
Tastatur:	stainsteel, intrinsic safe, german/english version	
Software:	Windows 2000/ XP with harddisc (1) Embedded Windows with CF Flash(2)	Windows 2000/ XP with harddisc(1) Embedded Windows with CF Flash(2)



**Elektro - Elektronik
Pranjic**

Certified according DIN EN ISO 9001:2000
and according to directive 94/9/EG

Hauptstr. 380 • D-44649 Herne
Tel.: +49 - 23 25-79 11 67 • Fax +49 - 23 25 - 5 16 01

Internet: www.eep.de
E-Mail: info@eep.de